

# Ampliroll®

# 31,000 POUNDS

## 140 SERIES



### Why buy a HookLift?

Do you have trucks that are not always being used?  
Do you have a difficult time finding quality drivers?  
Is there a piece of equipment you could use, but  
can't justify adding another truck?

**It's Multi-tasking for your truck.  
The possibilities are Infinite.**

With an Ampliroll® you can do just about anything.

### Deliver — Load — Dump

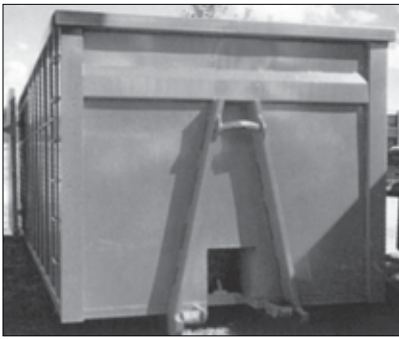
### FEATURES

- **Sliding Jib** gives you greater range of body lengths and optimal weight distribution.
- **Twin Pivot** allows you to dump a uniform pile of material.
- **Dual Cylinders** gives greater stability while dumping and loading.
- **Safely** operated from the drivers seat.
- **Dock Level** loading and unloading.
- **Double** your payload by pulling another body on a trailer.
- **Maneuverable** to operate, the container can be loaded within a **60 degree** arc.
- **Spot** the container exactly where you want it, by pushing it into place with no damage.
- **Quickly** loads a body in less than one minute.
- **Investment** that will outlast your truck, Amplirolls® will last over **25 years**.
- Meets all highway safety standards.



The Ampliroll® HookLift was invented in 1969. Our process of laser cutting and robotic welding enables us to provide you with a complete line of hooklifts, that eliminate the use of **SHIMS** and **WEAR PADS**.

***Ampliroll® has been imitated  
but never duplicated.  
Compare the difference before you buy.***



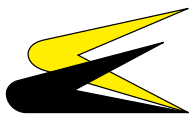
Ampliroll® Model	AMP 140-183-16	AMP 140-189-18
Previous Model	AL 140/1400-16	AL 140/1400-18
Lifting Capacity (including container)	31,000 lbs.	31,000 lbs.
Shipping Weight	4260 lbs.	4260 lbs.
Dump Angle	51 degrees	51 degrees
Cab to Axle	158 to 180 inches	170 to 192 inches
Cab to Trunnion	132 to 162 inches	144 to 174 inches
Over-All Length	192 inches	200 inches
Body Length	13 to 18 feet	13 to 20 feet
<b>Hydraulic Specifications:</b>		
Pump - Axial piston, 5,700 psi, 12 GPM @ 1,200 RPM, SAE B, direct mount.		
Controls - Low pressure hydraulic or air in cab.		
Reservoir - 12 gallons.		
Filter - 10 micron, return line with replaceable cartridge.		
Maximum operating pressure - 5,000 psi.		
Hoses, tubes & fittings all JIC/SAE specifications.		
<b>Steel: Special Alloy</b>	<b>ASTM A 572</b> in jib, central arm and tilting frame.	
<b>Safety Devices:</b>	Safety valve prevents jib operation during dump mode. Counter-balance valve to hold cylinder if hose breaks. Automatic locking device for dump mode. Slide through container locks.	
<b>Truck Requirements:</b>	GVWR - 33,000 to 56,000 lbs. Front Axle capacity - 10,000 to 16,000 lbs. Rear Axles capacity - 23,000 to 40,000 lbs.	

**Notice:** Longer containers may not comply with I.C.C. bumper regulations and can effect dump angle.

Inside Controls



Distributed by:



**marrel**  
CORPORATION

4750 14 Mile Road NE  
Rockford, MI 49341  
Phone: (616) 863-9155  
Fax: (616) 863-9177  
Toll Free: (866) 822-3580  
E-mail: [equipment@amplirollusa.com](mailto:equipment@amplirollusa.com)  
[www.amplirollusa.com](http://www.amplirollusa.com)